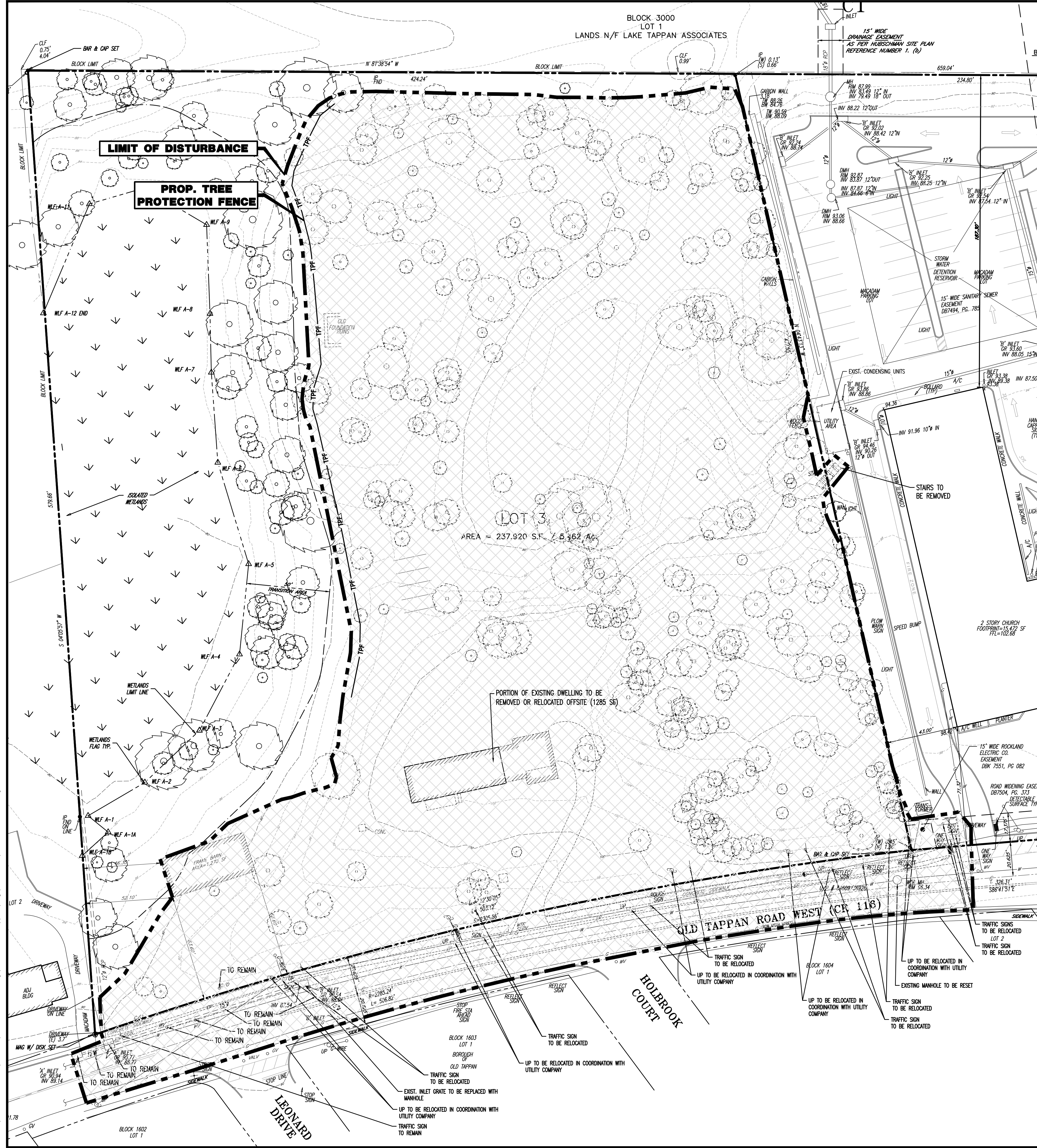


Plotted: 09/30/22 - 1:27 PM. By: jdemartins
File: P:\DCEPC PROJECTS\1423 Capital Seniors Housing\09-006 Old Tappan\dwg\Site Plans\0142399006SR10.dwg, ----> 04: EXISTING CONDITIONS & DEMOLITION PLAN



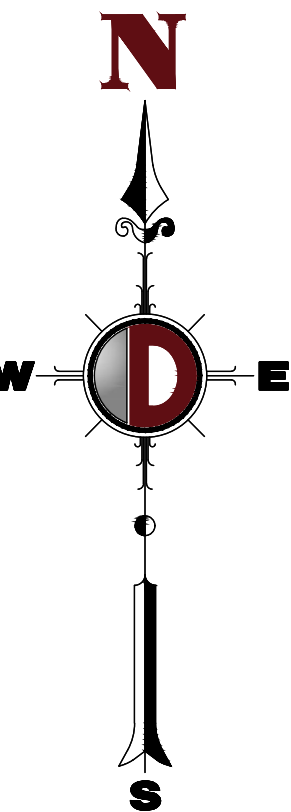
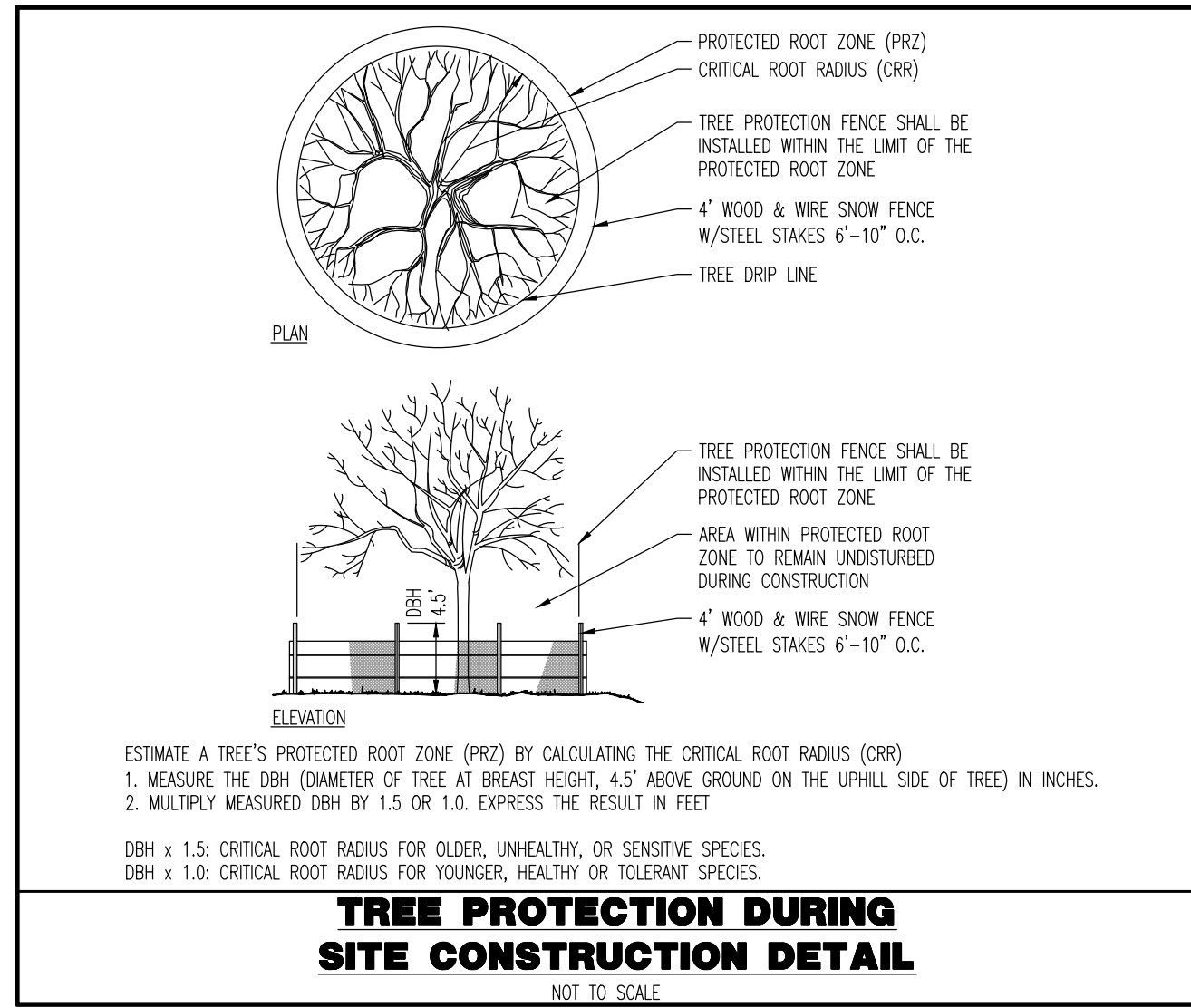
DEMOLITION NOTES

1. ALL DEMOLITION ACTIVITIES ARE TO BE PERFORMED IN STRICT ADHERENCE TO ALL FEDERAL, STATE AND LOCAL REGULATIONS.
2. PROCEED WITH DEMOLITION IN A SYSTEMATIC MANNER, FROM THE TOP OF THE STRUCTURE(S) TO THE GROUND.
3. COMPLETE DEMOLITION WORK ABOVE EACH FLOOR OR TIER BEFORE DISTURBING ANY OF THE SUPPORTING MEMBERS OF THE LOWER LEVELS.
4. DEMOLISH CONCRETE AND MASONRY IN SMALL SECTIONS.
5. REMOVE STRUCTURAL FRAMING MEMBERS AND LOWER THEM TO THE GROUND BY MEANS OF HOISTS, DERRICKS OR OTHER SUITABLE METHODS.
6. BREAK UP CONCRETE SLABS-ON-GRADE, UNLESS OTHERWISE DIRECTED BY OWNER.
7. LOCATE DEMOLITION EQUIPMENT THROUGHOUT THE STRUCTURE AND REMOVE MATERIALS SO AS TO NOT IMPOSE EXCESSIVE LOADS ON SUPPORTING WALLS, FLOORS, OR FRAMING.
8. PROVIDE INTERIOR AND EXTERIOR SHORING, BRACING AND SUPPORTS TO PREVENT MOVEMENT, SETTLEMENT OR COLLAPSE OF STRUCTURES TO BE DEMOLISHED (AND ADJACENT FACILITIES, IF APPLICABLE).
9. DEMOLISH AND REMOVE ALL FOUNDATION WALLS, FOOTINGS AND OTHER MATERIALS WITHIN THE AREA OF THE DESIGNATED FUTURE BUILDING, ALL OTHER FOUNDATION SYSTEMS, INCLUDING BASEMENTS, SHALL BE DEMOLISHED TO A DEPTH OF NOT LESS THAN ONE FOOT BELOW PROPOSED PAVEMENT OR, BREAK BASEMENT FLOOR SLABS, SEAL ALL OPEN UTILITY LINES WITH CONCRETE. CONTRACTOR TO REVEAL STRUCTURE PRIOR TO DEMOLITION TO DETERMINE IF BASEMENT, CRAWL SPACE OR ANY SUB-STRUCTURE EXISTS. ANY SUB-STRUCTURE, INCLUDING BASEMENTS SHALL BE REMOVED IN ITS ENTIRETY OR AS DIRECTED BY OWNER.
10. ERECT AND MAINTAIN COVERED PASSAGEWAYS IN ORDER TO PROVIDE SAFE PASSAGE FOR PERSONS AROUND THE AREA OF DEMOLITION. CONDUCT ALL DEMOLITION OPERATIONS IN A MANNER THAT WILL PREVENT DAMAGE AND PERSONAL INJURY TO STRUCTURES, ADJACENT BUILDINGS AND ALL PERSONS.
11. REFRAIN FROM USING ANY EXPLOSIVES WITHOUT PRIOR WRITTEN CONSENT OF OWNER AND APPLICABLE GOVERNMENTAL AUTHORITIES.
12. CONDUCT DEMOLITION SERVICES IN SUCH A MANNER TO ENSURE MINIMUM INTERFERENCE WITH ROADS, STREETS, WALKS AND OTHER ADJACENT FACILITIES. DO NOT CLOSE OR OBSTRUCT STREETS, WALKS, OR OTHER OCCUPIED FACILITIES WITHOUT PRIOR WRITTEN PERMISSION OF OWNER AND ANY APPLICABLE GOVERNMENTAL AUTHORITIES. PROVIDE ALTERNATE ROUTES AROUND CLOSED OR OBSTRUCTED TRAFFIC WAYS, IF REQUIRED BY APPLICABLE GOVERNMENTAL REGULATIONS.
13. USE WATERING, TEMPORARY ENCLOSURES AND OTHER SUITABLE METHODS, AS NECESSARY TO LIMIT THE AMOUNT OF DUST AND DIRT RISING AND SCATTERING IN THE AIR. CLEAN ADJACENT STRUCTURES AND IMPROVEMENTS OF ALL DUST AND DEBRIS CAUSED BY THE DEMOLITION OPERATIONS. RETURN ALL ADJACENT AREAS TO THE CONDITIONS EXISTING PRIOR TO THE START OF WORK.
14. ACCOMPLISH AND PERFORM THE DEMOLITION IN SUCH A MANNER AS TO PREVENT THE UNAUTHORIZED ENTRY OF PERSONS AT ANY TIME.
15. COMPLETELY FILL BELOW GRADE AREAS AND VOIDS RESULTING FROM THE DEMOLITION OF STRUCTURES AND FOUNDATIONS WITH SOIL MATERIALS IN ACCORDANCE WITH THE GEOTECHNICAL REPORT, CONSISTING OF STONE, GRAVEL AND SAND, FREE FROM DEBRIS, TRASH, FROZEN MATERIALS, ROOTS AND OTHER ORGANIC MATTER. STONES USED WILL NOT BE LARGER THAN 6 INCHES IN DIMENSION. MATERIAL FROM DEMOLITION MAY NOT BE USED AS FILL. PRIOR TO PLACEMENT OF FILL MATERIALS, UNDERTAKE ALL NECESSARY ACTION IN ORDER TO ENSURE THAT AREAS TO BE FILLED ARE FREE OF STANDING WATER, FROST, FROZEN MATERIAL, TRASH, DEBRIS. PLACE FILL MATERIALS IN HORIZONTAL LAYERS NOT EXCEEDING 6 INCHES IN LOOSE DEPTH AND COMPACT EACH LAYER AT PLACEMENT TO 95% OPTIMUM DENSITY. GRADE THE SURFACE TO MEET ADJACENT CONTOURS AND TO PROVIDE SURFACE DRAINAGE.
16. REMOVE FROM THE DESIGNATED SITE, AT THE EARLIEST POSSIBLE TIME, ALL DEBRIS, RUBBISH, SALVAGEABLE ITEMS, HAZARDOUS AND COMBUSTIBLE SERVICES. REMOVED MATERIALS MAY NOT BE STORED, SOLD OR BURNED ON THE SITE. REMOVAL OF HAZARDOUS AND COMBUSTIBLE MATERIALS SHALL BE ACCOMPLISHED IN ACCORDANCE WITH THE PROCEDURES AS AUTHORIZED BY THE FIRE DEPARTMENT OR OTHER APPROPRIATE REGULATORY AGENCIES AND AUTHORITIES.
17. DISCONNECT, SHUT OFF AND SEAL IN CONCRETE ALL UTILITIES SERVING THE STRUCTURE(S) TO BE DEMOLISHED BEFORE THE COMMENCEMENT OF THE DESIGNATED DEMOLITION. MARK FOR POSITION ALL UTILITY DRAINAGE AND SANITARY LINES AND PROTECT ALL ACTIVE LINES. CLEARLY IDENTIFY BEFORE THE COMMENCEMENT OF DEMOLITION SERVICES THE REQUIRED INTERRUPTION OF ACTIVE SYSTEMS THAT MAY AFFECT OTHER PARTIES, AND NOTIFY ALL APPLICABLE UTILITY COMPANIES TO ENSURE THE CONTINUATION OF SERVICE.
18. THIS DEMOLITION PLAN IS INTENDED TO IDENTIFY THOSE EXISTING CONDITIONS WHICH ARE TO BE REMOVED. IT IS NOT INTENDED TO PROVIDE DIRECTION OTHER THAN THAT ALL PROCEDURES ARE TO BE IN ACCORDANCE WITH STATE, FEDERAL, LOCAL, AND JURISDICTIONAL REQUIREMENTS. THE CONTRACTOR SHALL BE RESPONSIBLE FOR ALL SAFETY PRECAUTIONS NECESSARY.

NOTES

1. IN ACCORDANCE WITH STATE LAW, THE CONTRACTOR SHALL BE REQUIRED TO CALL THE BOARD OF PUBLIC UTILITIES ONE CALL DAMAGE PROTECTION SYSTEM OR UTILITY MARK OUT IN ADVANCE OF ANY EXCAVATION.
2. CONTRACTOR IS RESPONSIBLE FOR FIELD VERIFYING ALL EXISTING SITE IMPROVEMENTS AND UTILITIES. ALL DISCREPANCIES SHALL BE IDENTIFIED TO THE ENGINEER IN WRITING.
3. ALL EXISTING UTILITIES TO BE ABANDONED SHALL BE DISCONNECTED AND CAPPED AT THE MAIN FOR WATER, AT THE CLEAN-OUT FOR SEWER AND THE SHUT-OFF VALVE OR MAIN FOR GAS IN ACCORDANCE WITH MUNICIPAL AND LOCAL UTILITY REQUIREMENTS.
4. ALL EXISTING DEBRIS SHALL BE REMOVED BY CONTRACTOR IN ACCORDANCE WITH MUNICIPAL AND LOCAL UTILITY COMPANY REQUIREMENTS.

*UPDATED TREE LOCATIONS PREPARED BY DYNAMIC SURVEY, LLC



DEMOLITION PLAN LEGEND

